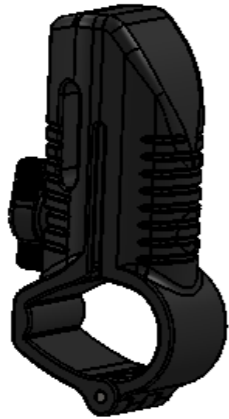




SA055 x 2



SA056 x 2



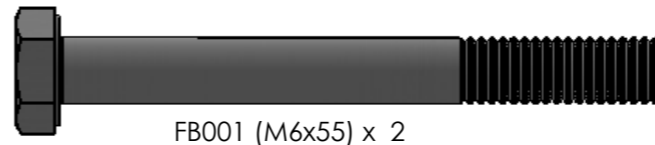
SA070 x 4



PS186 x 4



SA069 x 2



FB001 (M6x55) x 2



FS062 (M8x25) x 2



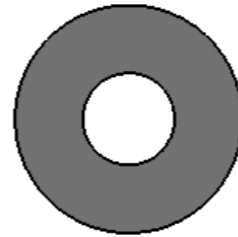
FS103 (M6x25) x 4



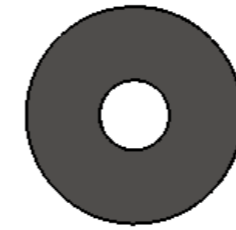
FW001 (M6) x 4



TP030 (M6) x 2



FW002 (M8) x 2

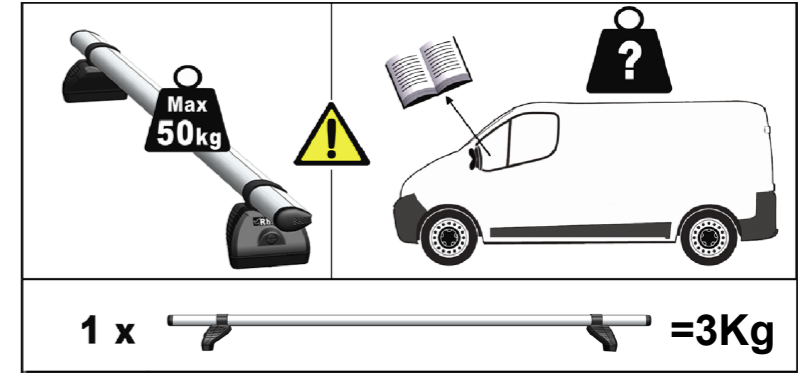


FW011 (M8) x 2

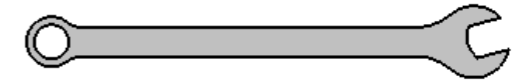
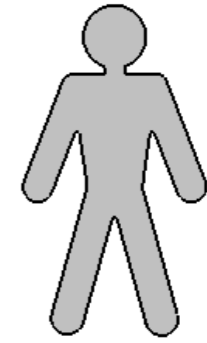


FT01 x 1

FT02 x 1



1 x [bar] = 3Kg



13mm x 1

